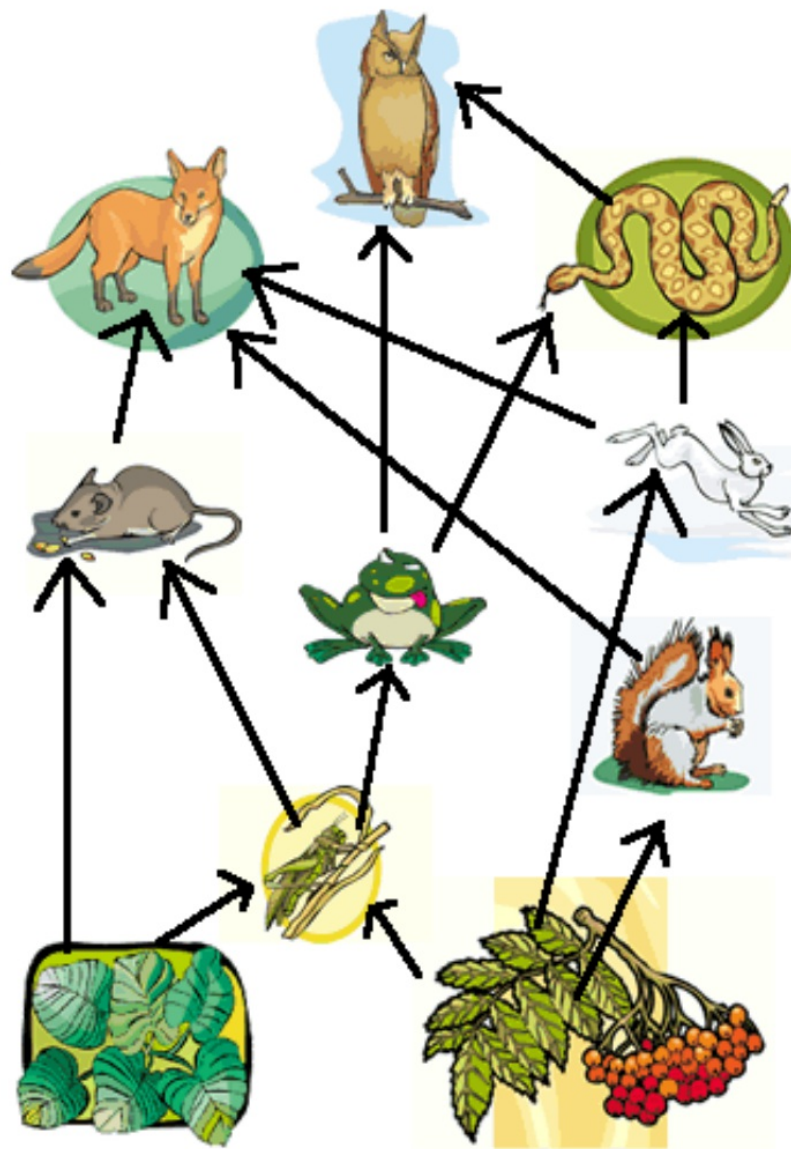


Food Webs



Food Webs

"A food chain shows how each living thing gets food, and how nutrients and energy are passed from creature to creature. Food chains begin with plant-life, and end with animal-life. Some animals eat plants, some animals eat other animals."



<http://www.sheppardsoftware.com/content/animals/kidscorner/foodchain/foodchain.htm>

Food Webs

All the energy transferred through food webs originally came from the _____.

First...

Producers: _____ take energy from the sun in order to create food for themselves.

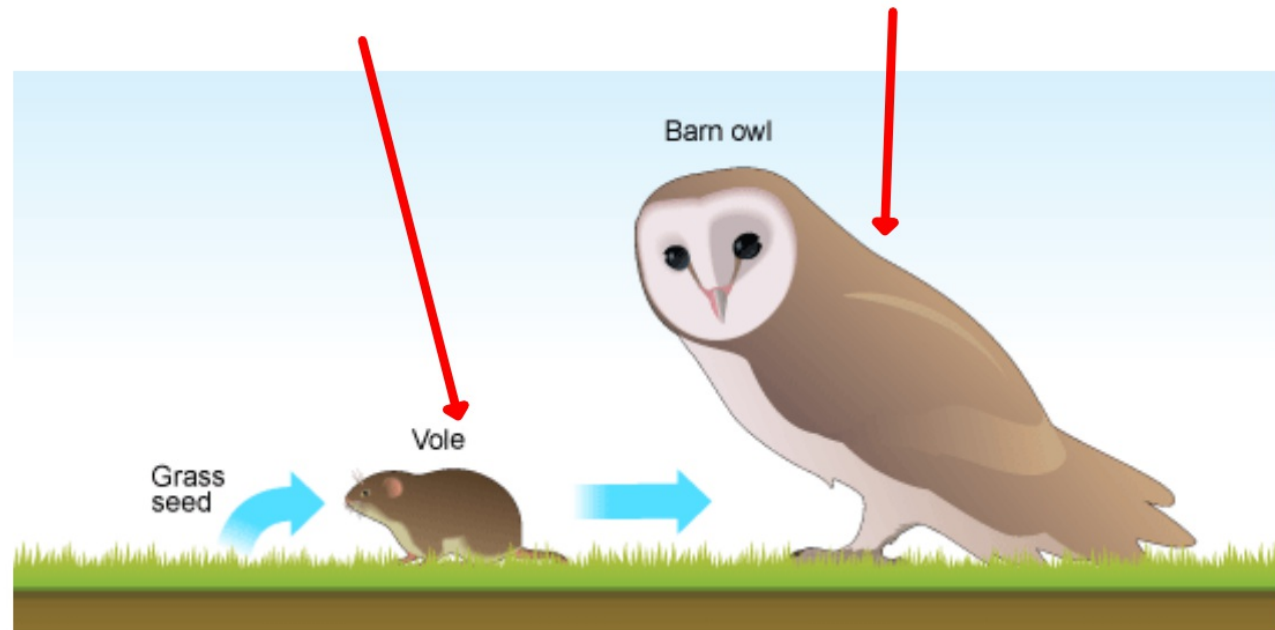


** Draw an example of a producer**

Producer = produce their own food

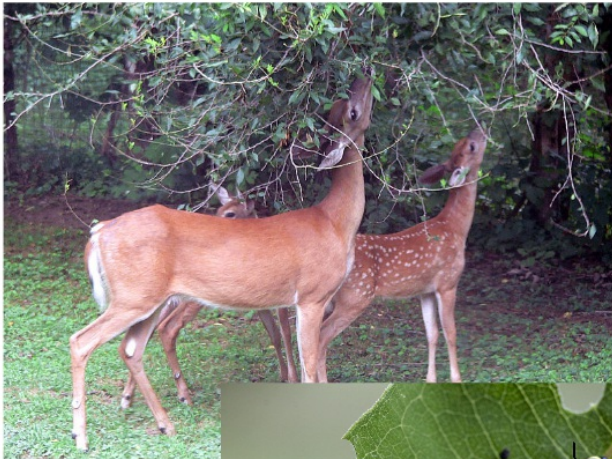
Second...

Consumers: Animals are consumers because they have to eat other animals or plants.



Consumers

Herbivore



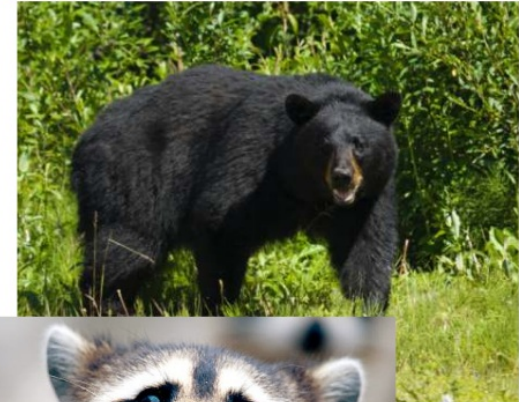
Only eat plants

Carnivore



Only eat meat

Omnivore



Eat both

Finally...

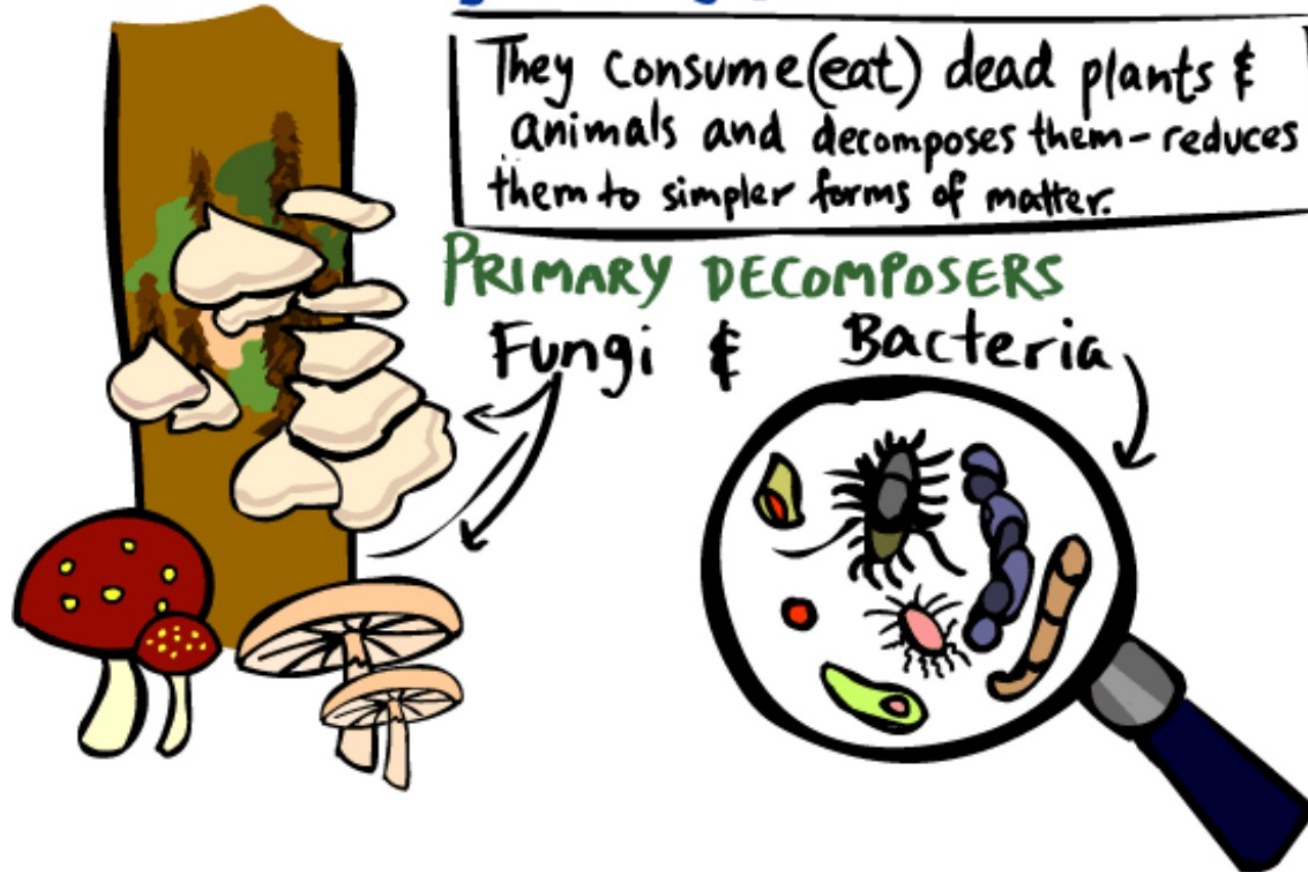
Decomposers

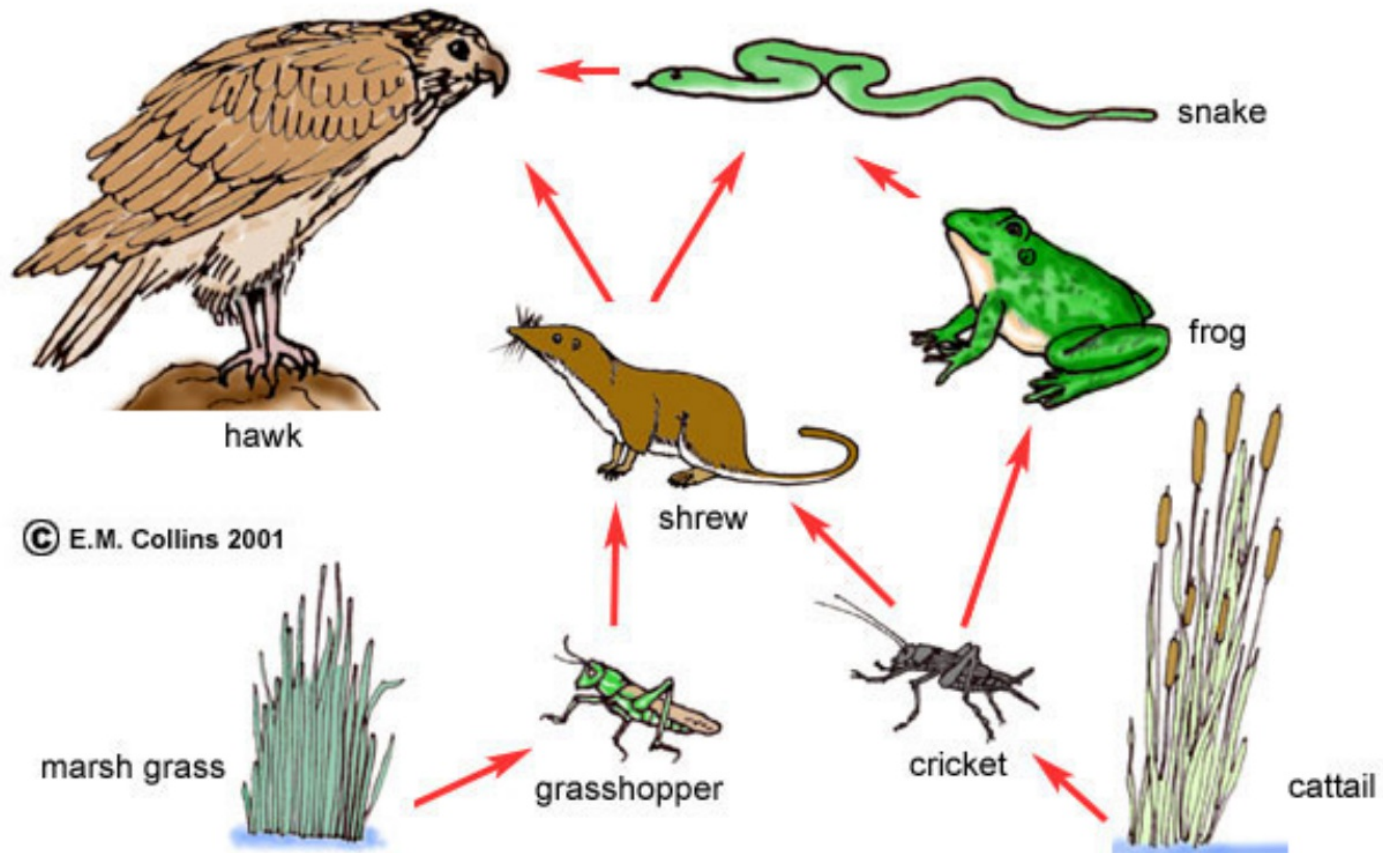
DECOMPOSERS

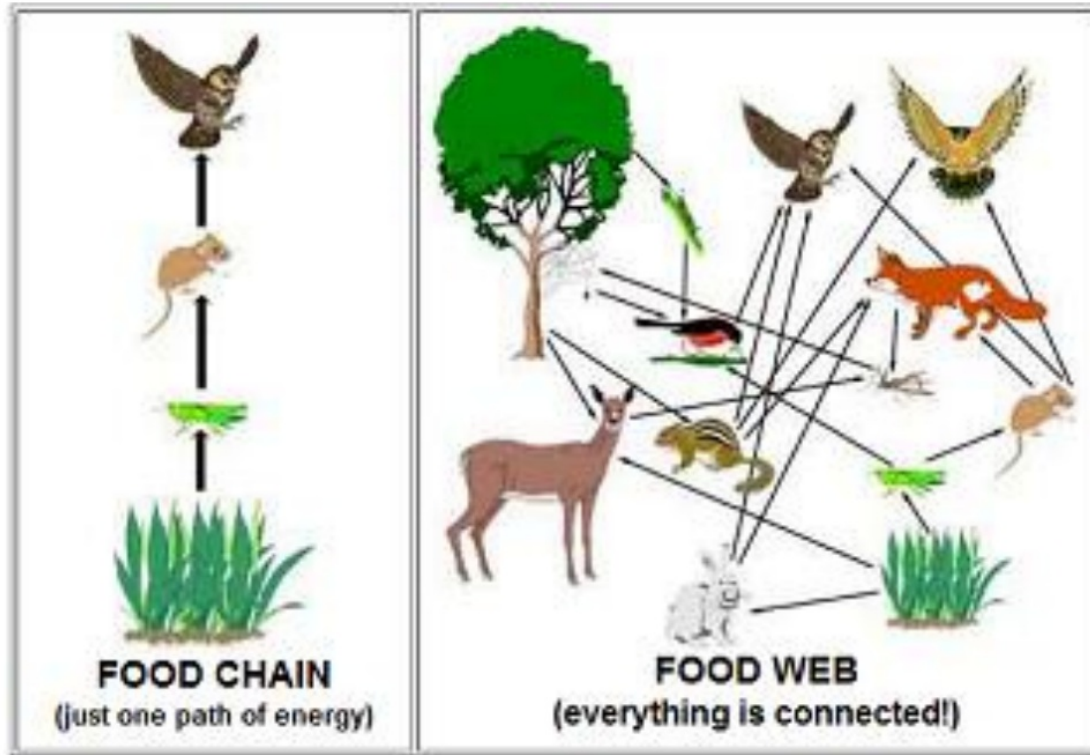
They consume (eat) dead plants & animals and decomposes them - reduces them to simpler forms of matter.

PRIMARY DECOMPOSERS

Fungi & Bacteria







FOOD CHAIN
(just one path of energy)

FOOD WEB
(everything is connected!)

Want Ad

Pick a producer, consumer, or decomposer.